

# MONTHLY MEMBERSHIP PROGRESS REPORT

District 26 M1

Results as of: 10/31/2024

GMT:

LOCATION MISSOURI

GMT CA

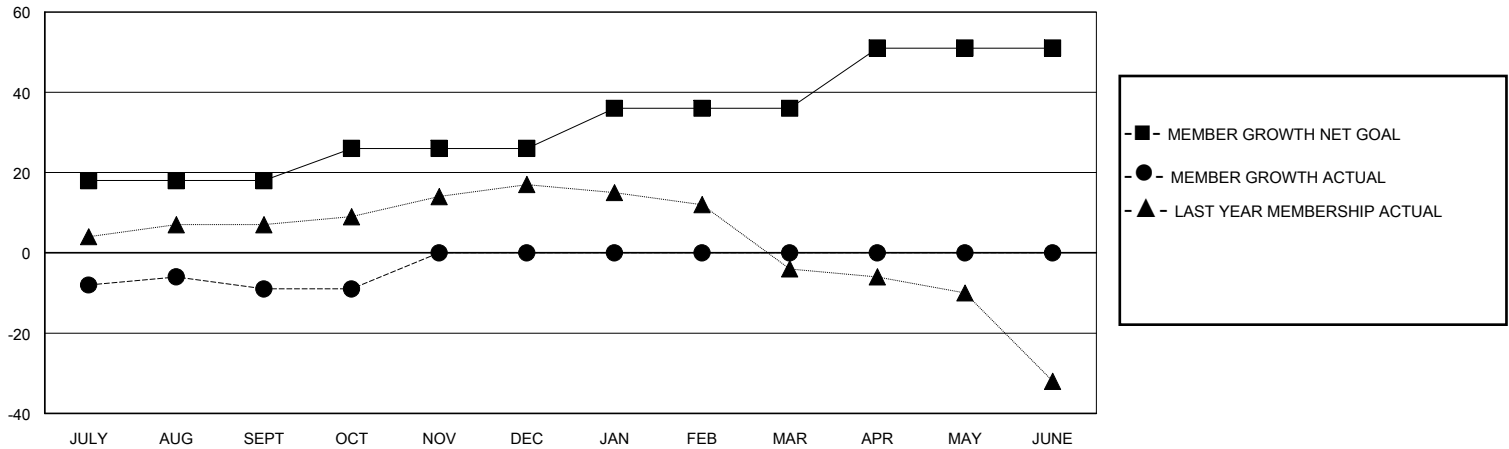
| Clubs                 |               |           |               |
|-----------------------|---------------|-----------|---------------|
| RESULTS FOR 2024-2025 |               |           |               |
| QUARTER               | NEW CLUB GOAL | NEW CLUBS | DROPPED CLUBS |
| JULY/AUG/SEPT         | 0             | 0         | 1             |
| OCT/NOV/DEC           | 1             | 0         | 0             |
| JAN/FEB/MAR           | 0             | 0         | 0             |
| APR/MAY/JUNE          | 0             | 0         | 0             |

| Members               |                        |                      |  |
|-----------------------|------------------------|----------------------|--|
| RESULTS FOR 2024-2025 |                        |                      |  |
| QUARTER               | MEMBER GROWTH NET GOAL | MEMBER GROWTH ACTUAL | DROPPED MEMBERS ACTUAL (including transfers) |
| JULY/AUG/SEPT         | 18                     | 13                   | 20   |
| OCT/NOV/DEC           | 8                      | 1                    | 1  |
| JAN/FEB/MAR           | 10                     | 0                    | 0  |
| APR/MAY/JUNE          | 15                     | 0                    | 0  |

GOALS AND ACTUAL NEW CLUBS CUMULATIVE



GOALS AND ACTUAL MEMBERS CUMULATIVE



DROPPED CLUBS: 1

8 CLUBS OF 35 ADDED 1 OR MORE NEW MEMBERS

GENDER DISTRIBUTION

MALE 680 (72.03%)  
FEMALE 263 (27.86%)

DROPPED MEMBERS

|                |           |
|----------------|-----------|
| DECEASED       | 3         |
| CLUB CANCELLED | 0         |
| OTHER          | 18        |
| <b>TOTAL</b>   | <b>21</b> |

[CLICK HERE FOR CUMULATIVE MEMBERSHIP DATA](#)

|                                 |   |
|---------------------------------|---|
| TOTAL FAMILY UNIT MEMBERS       | 0 |
| FAMILY MEMBERS PAYING HALF DUES | 0 |